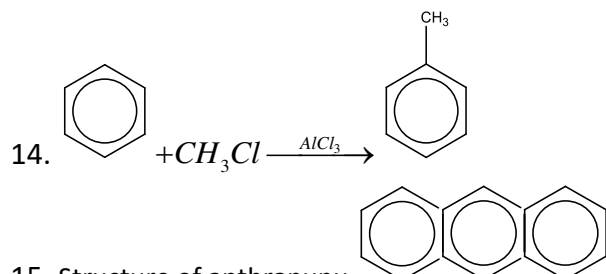
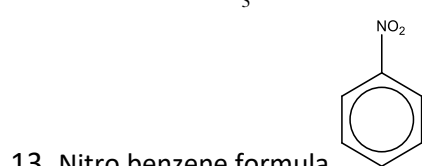
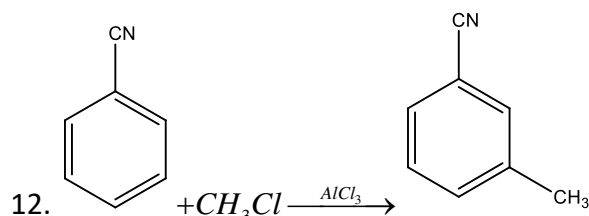


TELANGANA UNIVERSITY
S.S.R. DEGREE COLLEGE, NIZAMABAD (C.C:5029)
I SEMESTER INTERNAL ASSESSMENT I EXAMINATIONS
CHEMISTRY QUESTION BANK

I. Fill in the blanks

1. Ionic compounds contain 2 opposite charges ions
2. Lattice energy \propto charge anion \propto 1/size of the ion
3. Heat of solution = Heat of hydration – Lattice energy
4. As the lattice energy is more the m.p & B.P of a ionic solid more
5. Covalent bond is directional & they exhibits isomerism
6. VSPER theory developed by Gillespie & Nyholm
7. In sp hybridization bond angle is 180⁰
8. P-percentage of SP hybridization 50%
9. Be atomic number 4
10. $\text{CH}_3 + \text{Cl} \longrightarrow \underline{\text{CH}_3\text{Cl}}$
11. $\text{R}-\text{O}-\text{O}-\text{R} \xrightarrow{h\nu} 2\text{RO}$

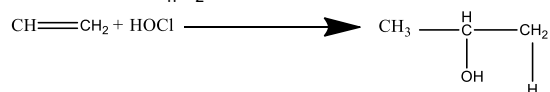


15. Structure of anthranunu
16. Benzene is cyclic planar compound having alternate π bond
17. Catalytic hydrogenation of alkenes gives Alkanes
18. The order of reactivity of 'H' atom 3⁰>2⁰>1⁰
19. $\text{CH}_4 + \text{Cl}_2 \xrightarrow[\text{light}]{h\nu} \text{CCl}_4 + \text{HCl}$
20. Formula of butane CH₃-CH₂-CH₂-CH₃
21. Structure of PCl₅ Trigonal bipyramidal
22. Shape of d-orbital double dumb bell
23. " σ " bond is formed by axial over laps of two orbital's
24. Structure of inorganic Benzene B₃N₃H₆
25. The order of acidity of BX₃ in BI₃ > BBr₃ > BCl₃ > BF₃
26. Example of Sp³d³ hybridization IF₇
27. Shape of H₂O V-shape
28. bp-bp < bp-lp < lp-lp VSPER Theory
29. BN structure graphite
30. $\text{Al}_4\text{C}_3 + 12\text{H}_2\text{O} \rightarrow 3\text{CH}_4 + 4\text{Al}[\text{OH}]_3$
31. Basicity of Amines 2⁰>1⁰>3⁰>NH₃
32. +M.E groups: -OH, -OCH₃, -X, -NH₂, -NHR, -NR₂

33. Name of CH_3^+ Methyl carbocation

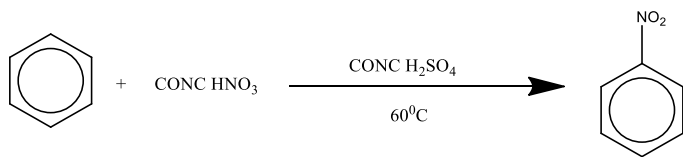
34. Grignard reagent $Rmgx$

35. Alkenes G.F C_nH_{2n}



36.

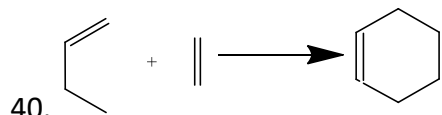
37. Example for conjugated dienes $CH_2 = CH - CH = CH_2$



38.



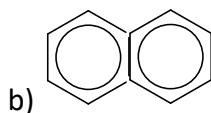
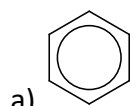
39. Is non benzenoid compound



40.

II. Short Questions

1. Benzenoid compounds



2. Explain I.E effect?

Ans: Displacement of σ covalent bonded electron two words more E.N atom group is called inductive effect